

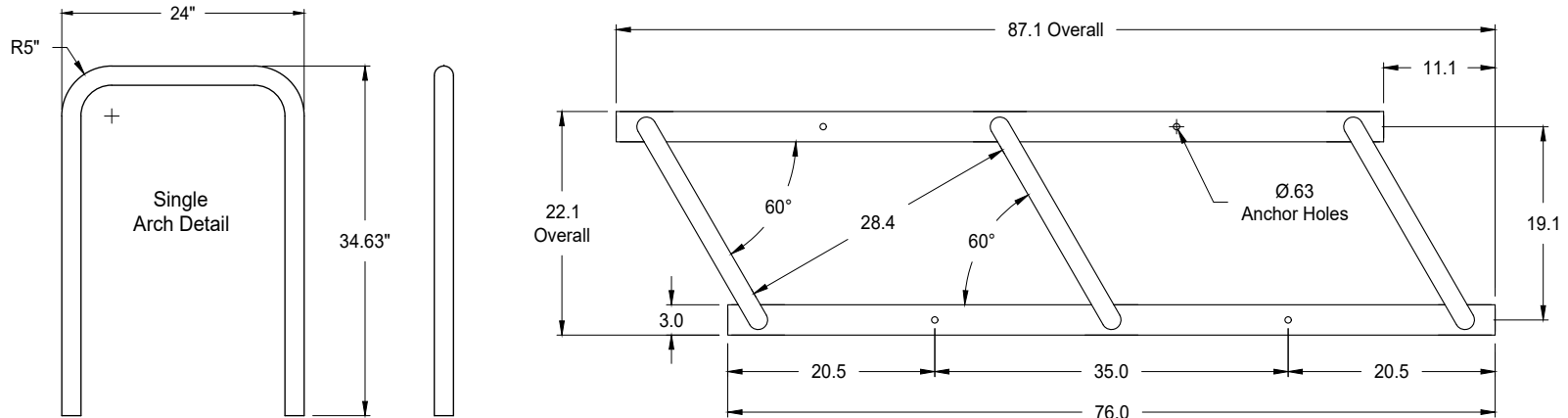


GREENSPOKE BIKE PARKING SOLUTIONS

1-844-888-9999
www.gogreenspoke.com

3 Arch Angled Bicycle Rack Fully Welded, Surface Mount with Rails - Model: 850040 - Specifications -

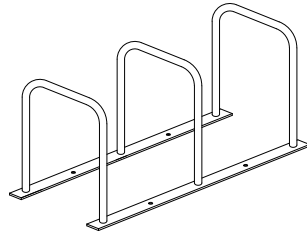
Rev.: 22Aug23



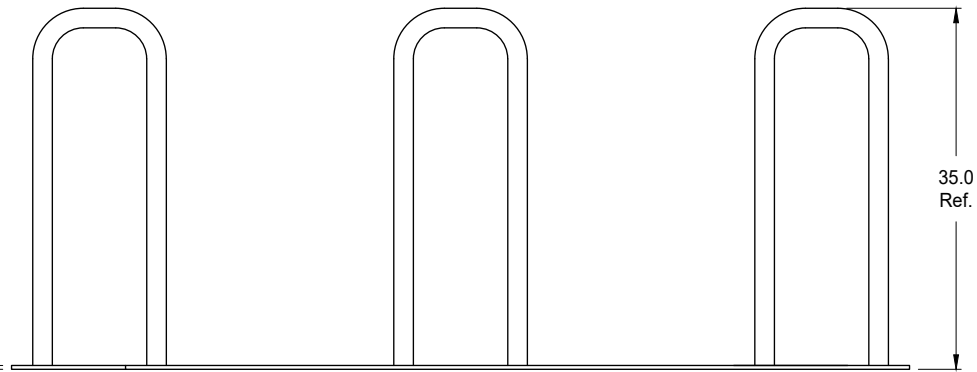
1.90" O.D.
x .125" Wall
Steel Tube

Model: 850040

Capacity: 6 Bicycles
(Approx. Weight: 82 Lbs)



3/8" Thick
Rails



Materials:

Tube: 1.90" O.D. x .125" Wall Steel Tube

Mounting Rails: 3/8" x 3" Steel Bar

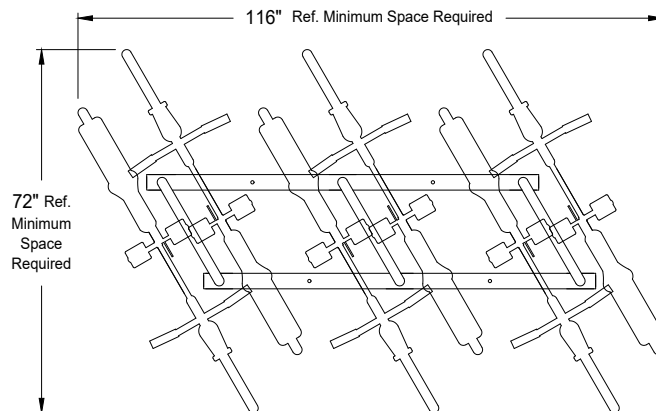
Note: Anchoring Hardware Available Upon Request.

Finish:

- 1) Polyester Powder over Zinc Rich Primer.
- 2) Hot Dip Galvanized.

Dimensions shown are in inches.

Greenspoke maintains a policy of continuous product improvement.
As a result, some details may change without notice.



Top View Showing Recommended Spacing Requirements with 6 Bikes (1/2 Scale)