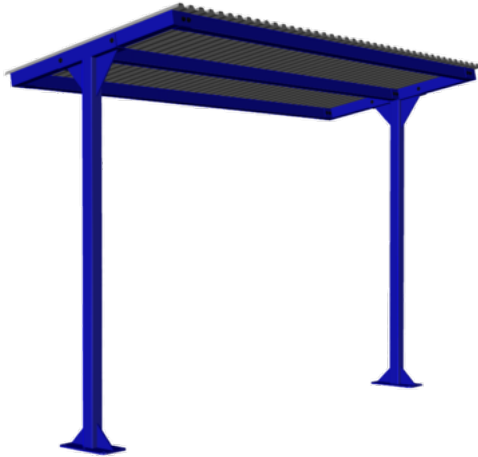


2 Post Shelter

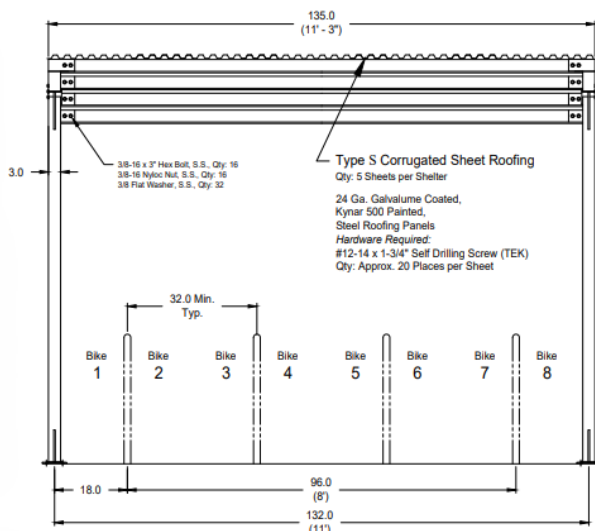
PRODUCT OUTLINE

BIKE SHELTERS



With its smaller footprint, this simple but effective 2 Post Shelter can protect 6-8 bikes from the worst elements and the mid-day sun. The frame is constructed from rugged, tubular steel and the roofing panels are corrugated steel. This design is simple to assemble and multiple shelters can be linked together (daisy-chained) to provide a protective colonnade of infinite length. Columns can be anchored directly to a reinforced concrete pad or concrete piers.

8 BIKE CAPACITY



FEATURES High Strength Steel Tubing
Heavy Duty Steel Base Plates
Stainless Steel Pivot Hardware

FINISH Hot Dipped Galvanized
Powder Coat

MOUNT Surface

For additional information, please view the detailed specifications for this product.