



# GREENSPOKE

## BIKE PARKING SOLUTIONS

1-844-888-9999  
www.gogreenspoke.com

# R-Rack Bike Rack

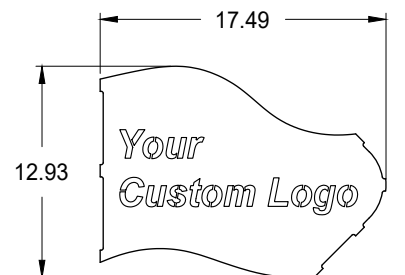
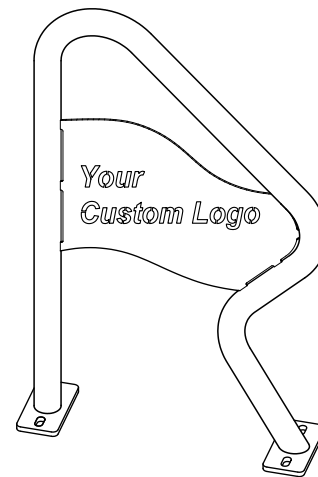
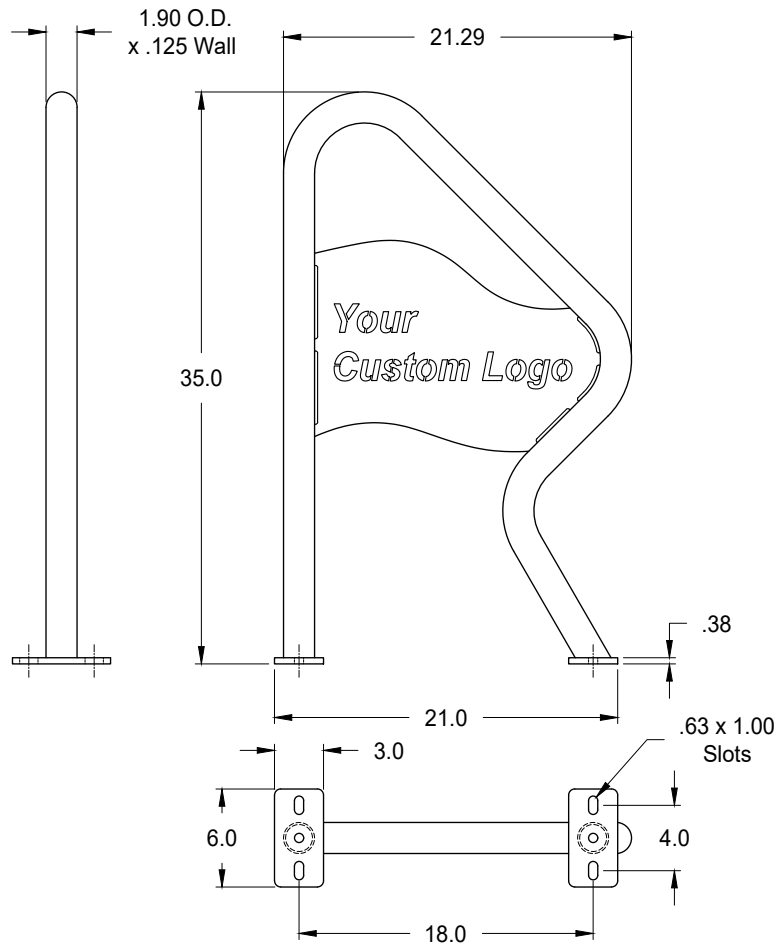
with Custom Logo Panel

Surface Mount

Model: **850020**

- Specifications -

20Jul23



Laser-Cut Panel Detail  
Material: 11 Ga. Steel (.12" Thick)

**Rack Capacity:** 2 Bicycles Max.

### Materials:

Tube: 1.90" O.D. x .125" Wall Steel Tube

Mounting Plates: 3/8" Thick Steel Plate

Laser-Cut Logo Plate: 11 Ga. Steel

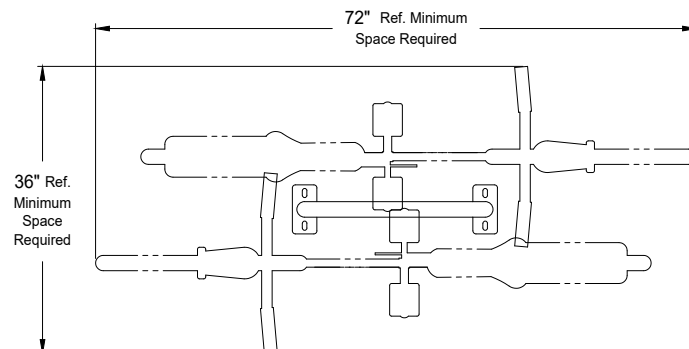
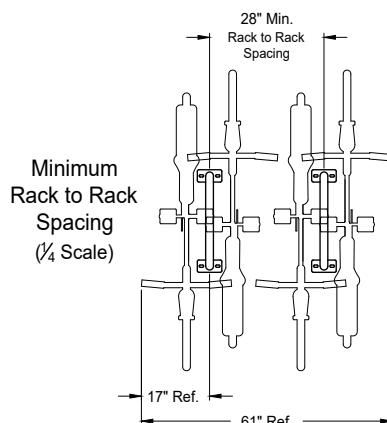
Note: Anchoring Hardware Available Upon Request.

### Finish:

- 1) Polyester Powder over Zinc Rich Primer.
- 2) Hot Dip Galvanized.

Dimensions shown are in inches.

Greenspoke maintains a policy of continuous product improvement.  
As a result, some details may change without notice.



Top View Showing Recommended Spacing Requirements  
(1/2 Scale)