



GREENSPOKE

BIKE PARKING SOLUTIONS

1-844-888-9999
www.gogreenspoke.com

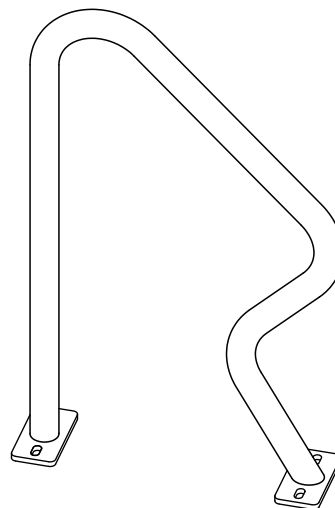
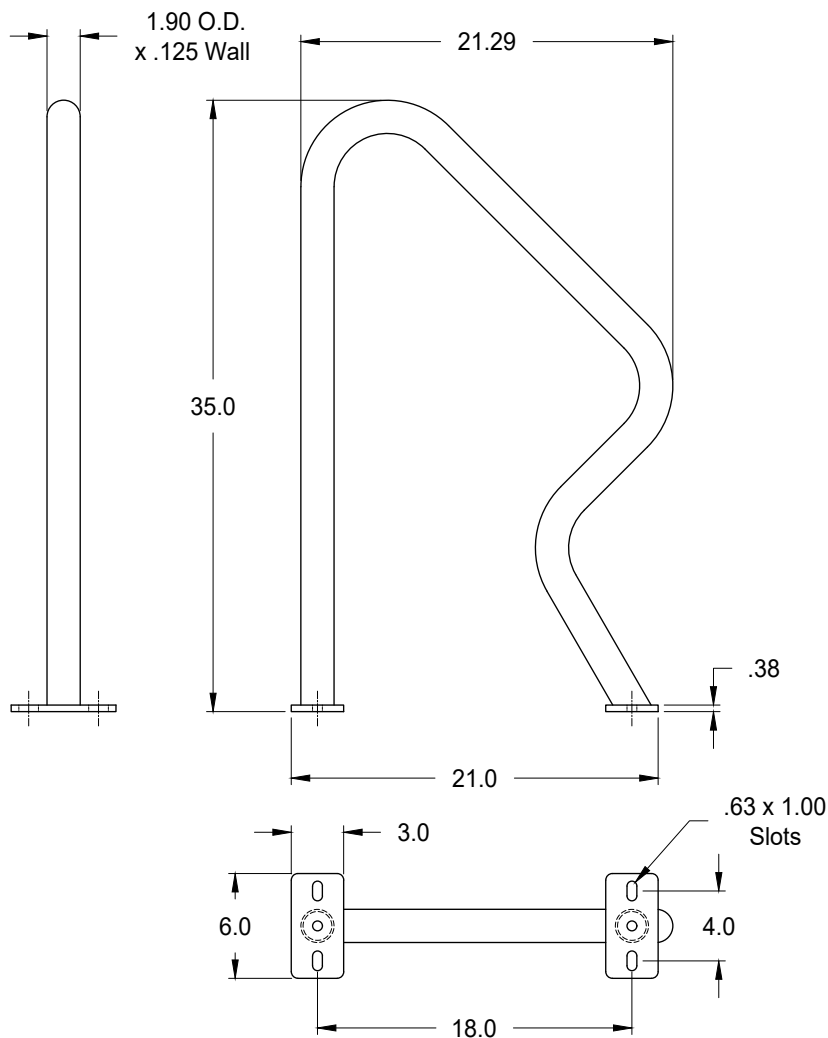
R-Rack Bike Rack

Surface Mount

Model: **850010**

- Specifications -

20Jul23



Rack Capacity: 2 Bicycles Max.

Materials:

Tube: 1.90" O.D. x .125" Wall Steel Tube

Mounting Plates: 3/8" Thick Steel Plate

Note: Anchoring Hardware Available Upon Request.

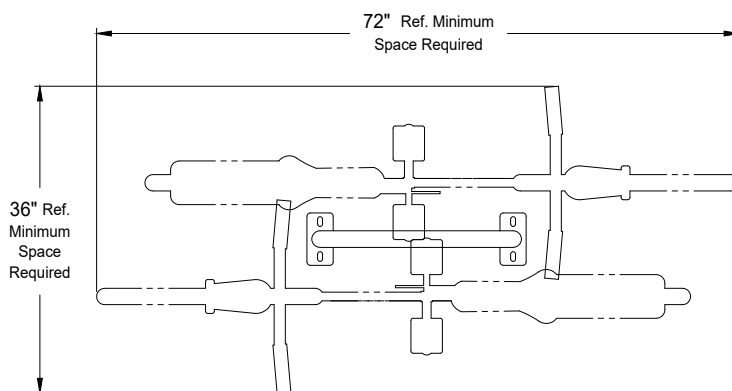
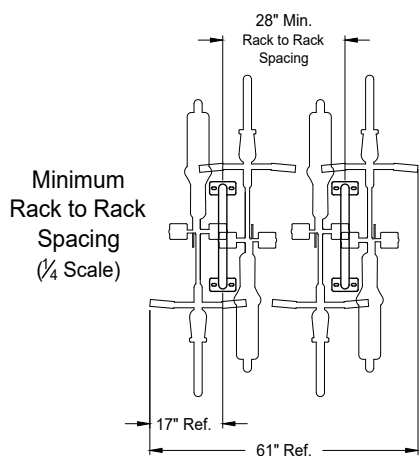
Finish:

- 1) Polyester Powder over Zinc Rich Primer.
- 2) Hot Dip Galvanized.

Dimensions shown are in inches.

Greenspoke maintains a policy of continuous product improvement.

As a result, some details may change without notice.



Top View Showing Recommended Spacing Requirements
(1/2 Scale)